

State of Wyoming Corner Record

(In compliance with the CORNER PERPETUATION AND FILING ACT, Wyoming Statutes, 1977, Section 36~11~101, et seq., and the Rules and Regulations of the Board of Registration for Professional Engineers and Professional Land Surveyors)

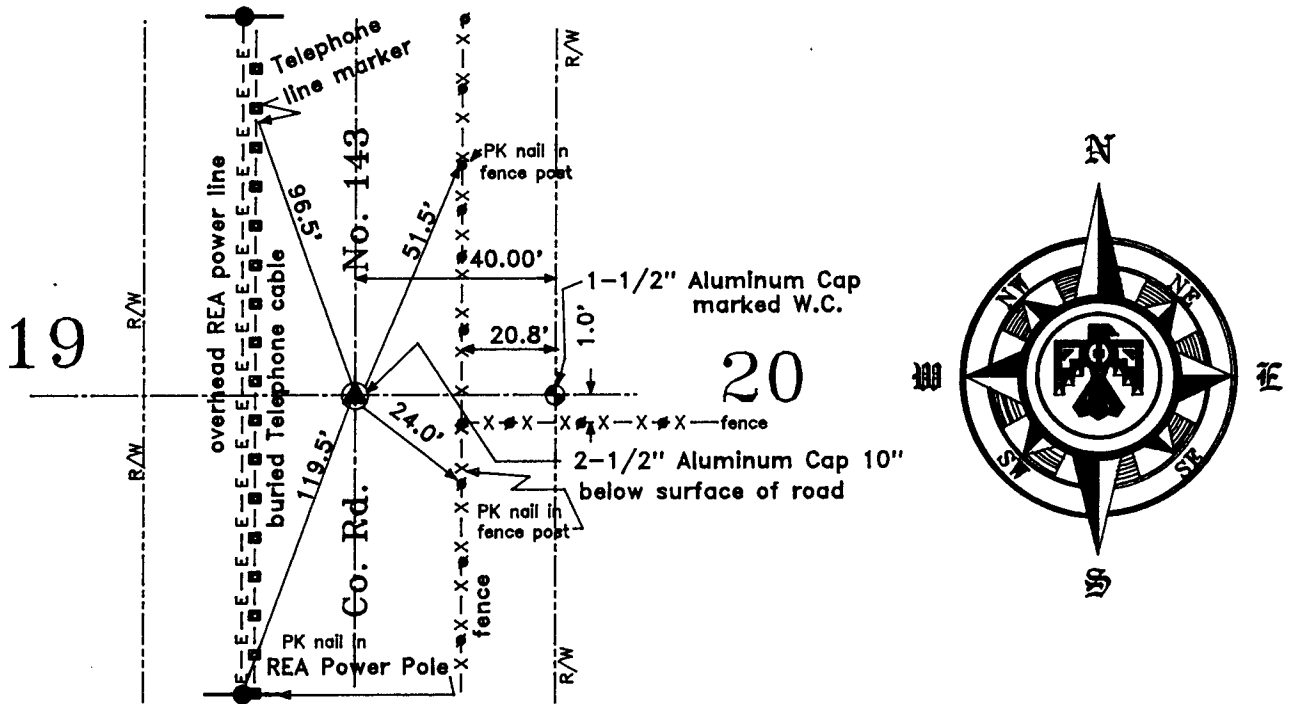
The reverse side of this form may be used if more space is needed.

The Record of the original survey and the citation of the source of the historical information (if the corner is lost or obliterated). The description of the corner monumentation evidence as found and/or the monument and it's accessories as established to perpetuate the location of this corner. A sketch of the relative location of this Monument, accessories, and reference points with the course and distance to adjacent corner (s) (if determined during this Survey). The Method and Rationale used for the reestablishment of lost and obliterated corner.

G.L.O.: Edwin James Deputy Surveyor & Alfred M. Rogers under joint contract, 20 May 1871, finish 16 June 1871, contract No.15: North between Section 19 & Section 20 (Variation 15.35°E), at 40.00 chains set Granite Stone 16"X12"X6" for 1/4 Section Corner,...

No evidence of the Original 1/4 corner exists. This corner was single proportioned from the Section corner common to Sections 18,20,29 & 30 as found and the Section corner common to Sections 17,18,19 & 20 as re established by this survey.

Set 2"X32" Iron pipe with a 2-1/2" Aluminum Cap at 10" below the surface of the gravel road (County Road 143 a.k.a. Wagon Wheel Road) as shown on the drawing below .



Date of Field Work: June A.D. 1999 Office Reference: 9030

Cross Index Diagram

T. 14 N. R. 63 W. 6th P.M.

	1	2	3	4	5	6	7	8	9	10	11	12	13	14	15	16	17	18	19	20	21	22	23	24	25
A																									
B																									
C																									
D																									
E																									
F																									
G																									
H																									
I																									
J																									
K																									
L																									
M																									
N																									
O																									
P																									
Q																									
R																									
S																									
T																									
U																									
V																									
W																									
X																									
Y																									
Z																									

Firm/Agency, Address
 Terrestrial Surveying & Mapping Co.
 "Your Friendly Neighborhood Surveyor"
 1127 Terry Ranch Road
 Cheyenne, Wyoming 82007
 Telephone Number: (307) 634-9360

This Corner Record was prepared by me or under my direction and supervision.
SEAL & SIGNATURE

